



# 7940 siaair

Swiss Finish in Perfection



Before painting



Final sanding of filler at hard to get at areas



Producing a mat finish on painted surfaces



For blending

1. Step

**siaair**

Grit: K600

Type of sanding: moist



1. Step

**siaspeed**

Grit: K1000

Type of sanding: moist



2. Step

**siaair**

Grit: K800

Type of sanding: moist



1. Step

**siaspeed**

Grit: P800

Type of sanding: dry



2. Step (Blend base coat)

**siaair**

Grit: K2000

Type of sanding: moist



3. Step (Blend clear coat)

**siaair**

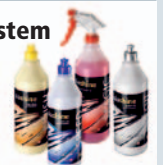
Grit: K3000

Type of sanding: moist



4. Step

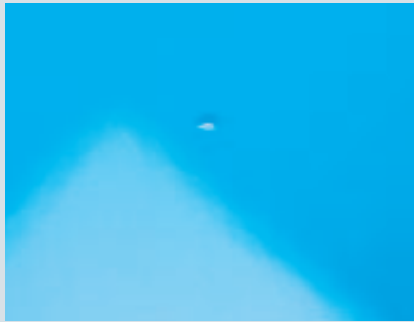
**siashine polishing system**



Perfect finish



## After painting



Removing dust inclusions



Removing paint runs



Removing orange peel effect

### 1. Step

#### siawat

Grit: P2000 – 2500  
Type of sanding: moist



### 2. Step

#### siaair

Grit: K3000  
Type of sanding: moist



### 3. Step

#### siashine polishing system



### Perfect finish



### 1. Step

#### siawat

Grit: P1200  
Type of sanding: wet



### 2. Step

#### siaair

Grit: K2000  
Type of sanding: moist



### 3. Step

#### siaair

Grit: K3000  
Type of sanding: moist



### 4. Step

#### siashine polishing system



### Perfect finish



### 1. Step

#### siaspeed

Grit: P1500  
Type of sanding: dry



### 2. Step

#### siaair

Grit: K2000  
Type of sanding: moist



### 3. Step

#### siaair

Grit: K3000  
Type of sanding: moist



### 4. Step

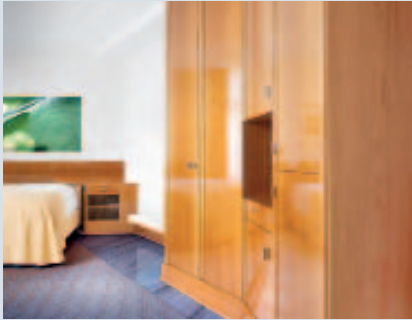
#### siashine polishing system



### Perfect finish



# Applications | High-gloss varnishes and solid surfaces



**Varnish errors on high-gloss surfaces**



**Buffing up curved components**



**Polishing mineral materials**

**1. Step**

**siaspeed**  
Grit: P1000  
Type of sanding: dry



**2. Step**

**siaair**  
Grit: K1500  
Type of sanding: moist



**3. Step**

**siaair**  
Grit: K3000  
Type of sanding: moist



**4. Step**

**siashine polishing system**



**Perfect finish**



**1. Step = Fine sanding wood**

**siaair**  
Grit: K240  
Type of sanding: dry



**2. Step (Intermediate sanding)**

**siaair**  
Grit: K320 – 500  
Type of sanding: moist



**3. Step (Prep. for polishing)**

**siaair**  
Grit: K1500 – 3000  
Type of sanding: moist



**4. Step**

**siashine polishing system**



**Perfect finish**



**1. Step**

**siaspeed**  
Grit: P320  
Type of sanding: dry



**2. Step = surface matt**

**siaair**  
Grit: K320 – 500  
Type of sanding: moist



**3. Step = surface silky luster**

**siaair**  
Grit: K800 – 1500  
Type of sanding: moist



**4. Step (Prep. high-gloss surface)**

**siaair**  
Grit: K3000  
Type of sanding: moist



**5. Step**

**siashine polishing system**



**Perfect finish**



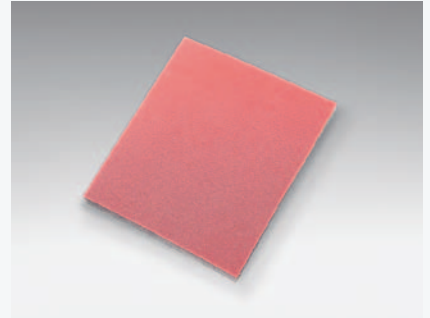
# Range of products



**7940 siaair**  
**Disc ø 80 mm**  
 3647.2462.xxxx.01 (T3306)  
 Grit range: K1000, K2000, K3000, K4000 with siafast



**7940 siaair**  
**Disc ø 150 mm**  
 5156.3687.xxxx.01 (T3307)  
 Grit range: K240, K360, K500, K600, K800, K1000, K1500, K2000, K3000, K4000 with siafast



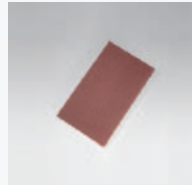
**7940 siaair**  
**Strip 115 x 140 mm**  
 6329.7598.xxxx.01 (T3308)  
 Grit range: K600, K800, K1000, K1500, K2000 with siafast



**1950 siaspeed**  
 ø 150 mm, 15-hole  
 7546.2948.xxxx.01  
 P40 – P600  
 with siafast



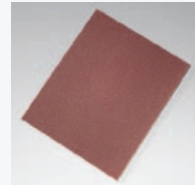
**1950 siaspeed**  
 ø 150 mm, 15-hole  
 7546.2948.xxxx.xx  
 P800 – P1500  
 with siafast



**1913 siawat fc**  
 70 x 125 mm  
 5980.9923.xxxx.xx  
 P180 – P2500  
 with siafast



**1913 siawat fc**  
 140 x 230 mm  
 9219.5517.xxxx.xx  
 P1500 – P2500  
 plain, without siafast



**1913 siawat fc**  
 230 x 280 mm  
 3100.3713.xxxx.xx  
 P060 – P2500  
 plain, without siafast



**1913 siawat**  
 ø 35 mm  
 4269.7970.xxxx.xx  
 P1500, 2000, 2500  
 with siafast



**1913 siawat**  
 ø 35 mm  
 9251.0230.xxxx.01  
 P1500, 2000, 2500  
 with SAF in dispenser box



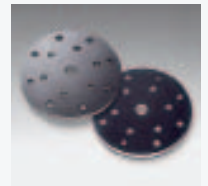
**Finiblock**  
 ø 30 mm  
 0020.3285.01  
 hard/soft  
 with mikrolett



**Finiblock**  
 ø 30 mm  
 0020.3286.01  
 hard/soft  
 for self adhesive discs



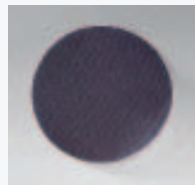
**Intermediate 103-hole with J-Hook**  
 ø 150 mm  
 0020.5886.01



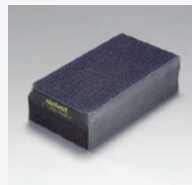
**Intermediate Pad 15-hole with mikrolett**  
 ø 150 mm  
 0020.4546.01



**Back plate 103-hole**  
 ø 150 mm  
 0020.574x.01  
 hard/soft/extra soft  
 with 5/16" and  
 M8 thread/shaft



**Protection disc**  
 ø 150 mm  
 0020.3453.01



**Hand sanding block**  
 for wet & dry sanding  
 70 x 125 mm  
 0020.0343.01  
 2 sides hard/soft  
 with mikrolett



**Hand sanding block**  
 70 x 125 mm  
 0020.0389.01  
 with slit, without klett



**Flexible hand sanding block**  
 60 x 128 x 16 mm  
 0020.3713.01  
 2 sides soft/extra soft



**siashine fast cut**  
 1 liter  
 0020.4898.01



**siashine speed**  
 1 liter  
 0020.3615.01



**siashine finish**  
 1 liter  
 0020.3616.01



**siashine magic**  
 1 liter  
 0020.3617.01



**Micro fibre cloth**  
 380 x 380 mm  
 0020.3185.01



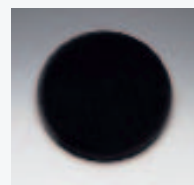
**Lamb skin disc**  
 0020.0265.01 ø 170 mm  
 0020.4897.01 ø 80 mm



**Foam disc**  
 hard  
 0020.2018.01 ø 170 mm  
 0020.4896.01 ø 80 mm



**Foam disc**  
 soft  
 0020.0264.01 ø 170 mm  
 0020.4895.01 ø 80 mm



**Foam disc**  
 extra soft  
 0020.0262.01 ø 170 mm  
 0020.4894.01 ø 80 mm

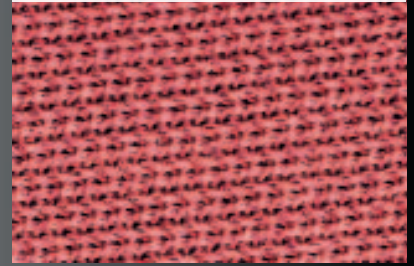
## siaair Technology

So clever can an abrasive disc be. On the outside, the ingenious net-backed abrasive, in the middle the foam cushioning which equalizes the application pressure and on the inside the well proven siafast hook and loop fastening system. This makes you shine, and your work too.

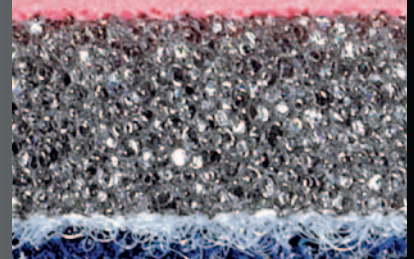
- **very long lifetime**
- **low scratch depth**
- **equalizing application pressure**
- **waterproof and washable**
- **minimum clogging when sanding dry**
- **can be used many times**
- **absorbs water**
- **resistant to silicon remover**
- **air and water permeability**



**1 Net backed abrasive**



**2 Foam cushioning**



**3 siafast fastening system**



sia Abrasives Industries AG  
8501 Frauenfeld  
Switzerland

Art. ID: 0020.6073.01  
00.000.082010  
© by sia Abrasives Industries AG – All rights reserved

[www.sia-abrasives.com](http://www.sia-abrasives.com)

