

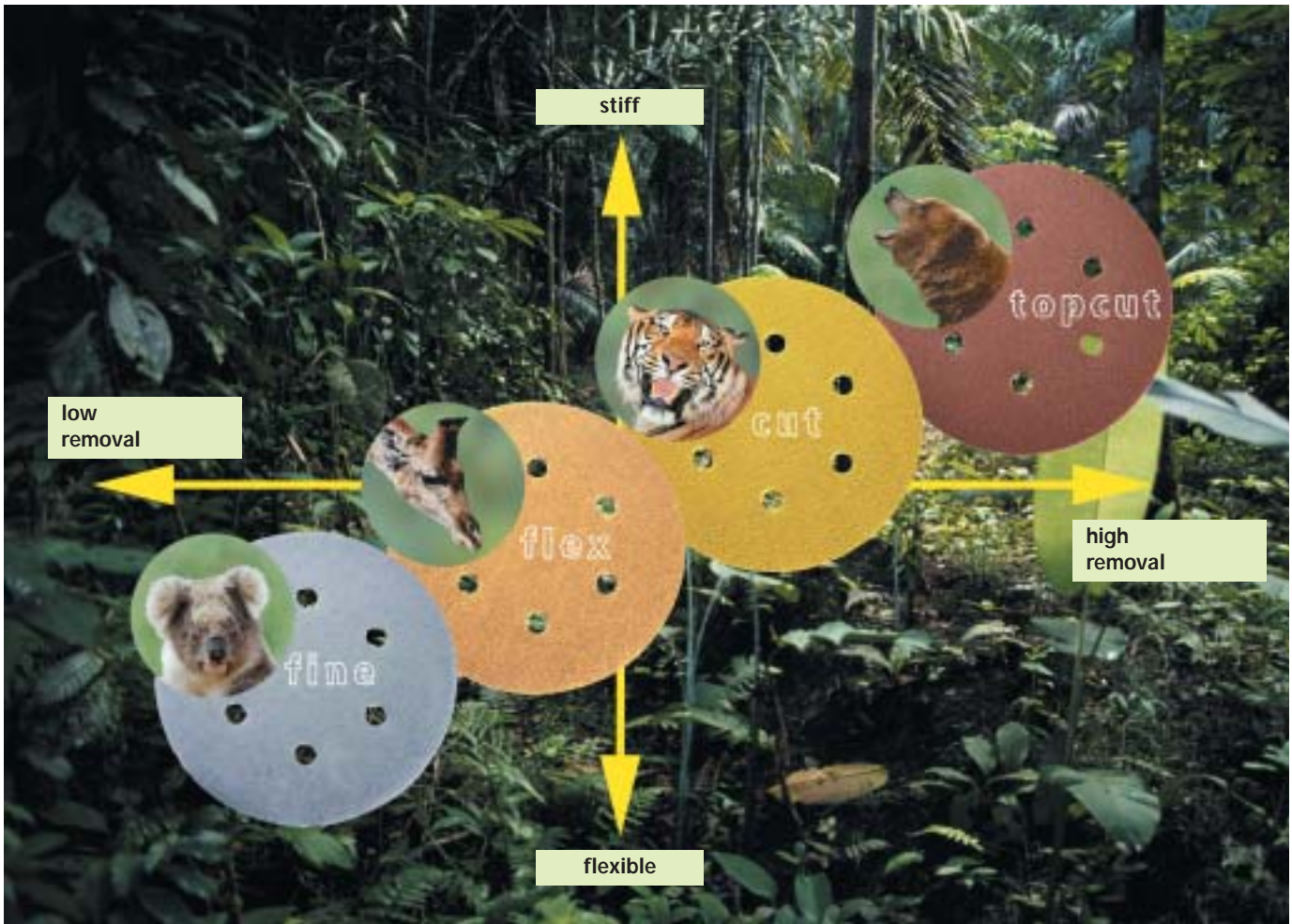
Sanding systems for paint and lacquer



Sia
ABBASIVES

lu In

new siarexx family



Nature: the perfect role model

Different habitats and modes of life play an important role in determining the physical characteristics and behaviour patterns of all living things. Whether large or small, strong or gentle, aggressive or mild-tempered, it is no accident that each animal is perfectly adapted to its specific environment.

The same might be said of the new siarexx family: each of our four new siarexx abrasives has its own unique qualities – just as in the

animal world. These performance features are perfectly adapted to different sanding applications, giving the specialist perfect results every time.

The new siarexx family ranges from the cuddly, gentle **1748 siarexx fine** (koala) and the flexible **1935 siarexx flex** (giraffe) through to the high-performance **1960 siarexx cut** (tiger) and the **1915 siarexx topcut** (brown bear) for maximum-removal applications. All

these new sanding products have two things in common, however: their quality and first-class technical properties. The perfect partner for professional users, this new, performance-oriented siarexx family guarantees impeccable surface finishes.



1748 siarexx fine

A softly clinging abrasive that will snuggle up like a cuddly koala bear. This cutting silicon carbide series is perfect for obtaining very smooth surfaces during intermediate lacquer-sanding operations. Extremely flexible for effortless folding and rolling.
Grit range: P150 -P400



1935 siarexx flex

An abrasive that is as lithe and supple as a giraffe's neck. This ultra-flexible semi-friable corundum series is highly adaptable and exhibits minimal clogging in varnish, filler and paint applications. 1935 siarexx flex is therefore recommended for all profiled and rounded work pieces and all lacquer applications.
Grit range: P120 - P600



1960 siarexx cut

As strong and steadfast as a tiger: our newly-designed siarexx cut! An unbeatable combination of flexibility and high removal makes this yellow series in semi-friable corundum your guarantee for perfect, stylish surface finishes on wood, lacquer and paint.
Grit range: P040 - P600



1915 siarexx topcut

As aggressive, tough and long-lived as a bear. This high-cutting, robust brown semi-friable corundum series assures top removal rates for hardwood and paint applications.
Grit range: P040 - P150

sia abrasives for hand-sanding machines and manual sanding

2920/21 siawood with optimised, application-specific belt connection. Long-term use thanks to robust cotton cloth. Very high removal rate with long edge life.

2933 siatur jo flexible and adaptable cloth abrasive with high removal rate and very long edge life.

1707 siapar with very high removal rate. siafast hook and loop fastening system. No clogging with materials that tend to smear.

1748 siasoft foam backing distributes pressure, creating an optimal sanding pattern. Readily adaptable to contours and rounded parts.

2951 siasoft uniform sanding pattern thanks to the foam backing which distributes the pressure. Very flexible cloth abrasive with high removal rate and long edge life.

1913 siawat fc streamlined, water-resistant manual sandpaper, for wet and dry use on coats of paint and varnish.

6120 siavlies for fast scuffing. Can be used on both sides. Very long edge life, very low clogging. Discs are also available with siafast.

6000 siawool is the most adaptable and flexible abrasive of all. A convenient and safe alternative to steel wool. Ideal for final treatment of painted/varnished surfaces.

6200 scm 3-dimensional, cloth-reinforced nonwoven disk to remove rust, and to clean and remove old layers of paint by rotary sanding.

6300 siastrip 3-dimensional, robust, open-pore silicon carbide disk to remove rust and coats of paint.

4924 siamet fibre disk featuring edge stability, with wide and universal range of applications. High removal rate and cool sanding thanks to materials in cover binder.

siabrosse bristles with embedded sanding grit. Very long edge life. Applications: structuring and cleaning surfaces and profiles.

Sanding paint

Removing paint

**Fine sanding
Intermediate
paint/varnish sanding**



1915 siarexx topcut
P040 - P100

1960 siarexx cut
P040 - P100

1960 siarexx cut
P120 - P180

1935 siarexx flex
P120 - P180

1960 siarexx cut
P220 - P400

1935 siarexx flex
P220 - P400



1915 siarexx topcut
P040 - P100

1960 siarexx cut
P040 - P100

1960 siarexx cut
P120 - P180

1935 siarexx flex
P120 - P180

6120 siavlies
fine a

1960 siarexx cut
P220 - P600

1935 siarexx flex
P200 - P600

6120 siavlies
very fine a
ultra fine s xs

Product	Dimensions in mm	Grit range	Order no.
---------	------------------	------------	-----------



1915 siarexx topcut	Rolls plain		115 x 50 m	P040; P060-P150	T3283
1960 siarexx cut	Rolls plain		95 x 50 m	P040; P060-P320	T3229
			115 x 50 m	P040; P060-P600	T3232
	Sheets plain		93 x 230	P040; P060-P320	T3235
			115 x 280	P060-P400	T3236
	Sheets siafast		81 x 153	P060-P220	T3238
			115 x 115	P080-P240	T3239
			115 x 230	P040; P060-P240	T3240
	Sheets plain	8 holes	80 x 166	P060-P180	T3241
	with holes for dust extraction	8 holes	93 x 230	P040; P060-P320	T3242
		10 holes	115 x 280	P040; P060-P400	T3243
	Sheets siafast	8 holes	81 x 133	P040; P060-P400	T3244
	with holes for dust extraction	8 holes	81 x 153	P040; P060-P240	T3245
		8 holes	93 x 180	P040; P060-P400	T3246
		6 holes	100 x 110	P120-P220	T3247
		8 holes	115 x 115	P060-P400	T3248
		10 holes	115 x 228	P040; P060-P400	T3250
1935 siarexx flex	Sheets siafast		81 x 153	P120-P240	T3266
			115 x 115	P120-P240	T3267
			115 x 230	P120-P240	T3268
	Sheets siafast	8 holes	81 x 133	P120-P400	T3269
	with holes for dust extraction	8 holes	81 x 153	P120-P240	T3270
		8 holes	93 x 180	P120-P400	T3271
		8 holes	115 x 115	P120-P400	T3272
		10 holes	115 x 228	P120-P400	T3273



1915 siarexx topcut	Discs siafast		ø 125	P040; P060-P150	T3214	
			ø 150	P040; P060-P150	T3215	
			ø 180	P040; P060-P150	T3216	
			ø 200	P040; P060-P120	T3217	
	Discs siafast	6 holes	ø 150	P040; P060-P150	T3218	
	with holes for dust extraction	7 holes	ø 150	P040; P060-P150	T3286	
		9 holes	ø 150	P040; P060-P150	T3219	
		8 holes	ø 203	P040; P060-P150	T3220	
1960 siarexx cut	Discs siafast		ø 125	P040; P060-P500	T3252	
			ø 150	P040; P060-P500	T3253	
			ø 300	P040; P060-P120	T3254	
	Discs siafast	8 holes	ø 115	P040; P060-P240	T3255	
	with holes for dust extraction	8 holes	ø 125	P040; P060-P600	T3256	
		6 holes	ø 150	P040; P060-P600	T3257	
		7 holes	ø 150	P040; P060-P600	T3288	
		9 holes	ø 125	P040; P060-P600	T3282	
		9 holes	ø 150	P040; P060-P600	T3258	
1935 siarexx flex	Discs siafast		ø 125	P120-P500	T3274	
			ø 150	P120-P500	T3275	
	Discs siafast	8 holes	ø 125	P120-P600	T3276	
	with holes for dust extraction	6 holes	ø 150	P120-P600	T3277	
		7 holes	ø 150	P120-P600	T3287	
		9 holes	ø 150	P120-P600	T3278	
6120 siavlies	Discs	8 holes	ø 125	very fine a	≈ K320	N7009
	with holes for dust extraction	8 holes	ø 125	ultra fine s xs	≈ K800	N7009
	Discs	6 holes	ø 150	fine a	≈ K180	N7010
	with holes for dust extraction	6 holes	ø 150	very fine a	≈ K320	N7010
		6 holes	ø 150	ultra fine s xs	≈ K800	N7010
	Discs without holes		ø 150	very fine a	≈ K320	N7012
			ø 150	ultra fine s xs	≈ K800	N7012
	Discs siafast	6 holes	ø 150	fine a	≈ K180	N4316
	with holes for dust extraction	6 holes	ø 150	very fine a	≈ K320	N4316
		6 holes	ø 150	ultra fine s	≈ K600	N4316
	Discs siafast	9 holes	ø 150	fine a	≈ K180	N4317
	with holes for dust extraction	9 holes	ø 150	very fine a	≈ K320	N4317
		9 holes	ø 150	ultra fine s	≈ K600	N4317

Sanding paint

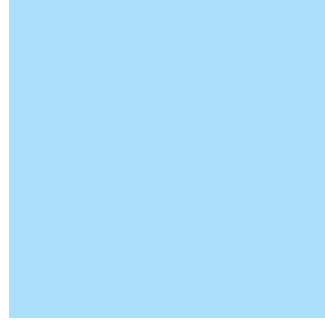
Removing paint

**Fine sanding
Intermediate
paint/varnish sanding**



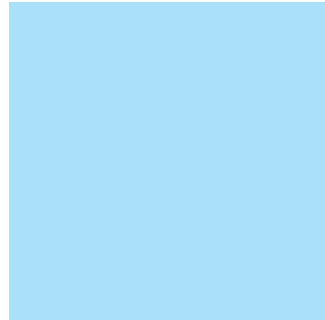
6300 siastrip
siabrosse
K046 / K060

6300 siastrip
siabrosse
K080 / K120



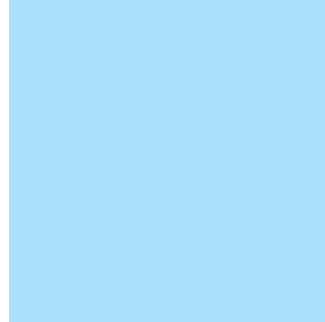
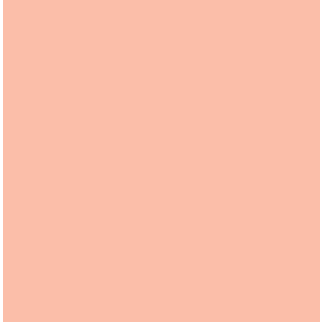
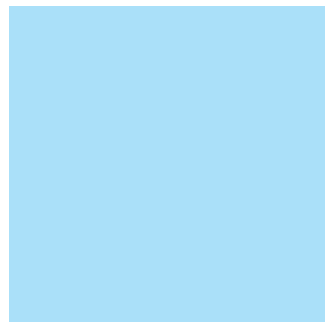
1915 siarexx topcut
P040 - P100
1960 siarexx cut
P040 - P120
1707 siapar
P016 - P100
4924 siamet fibre disc
P016 - P120
6200 scm coarse a / medium a

6200 scm
very fine a

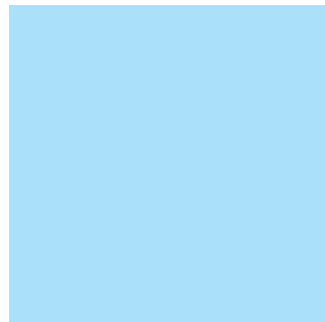


2920/21 siawood
P040 - P100
2933 siatur jo
P060 - P100

2920/21 siawood
P120 - P150
2933 siatur jo
P120 - P150



1707 siapar
P016



sia product		Dimensions in mm	Grit range	Order no.
-------------	--	---------------------	------------	-----------



6300 siastrip		∅ 100	K040	N3824
		∅ 150	K040	N3825
		∅ 200	K040	N3840
	Mandrel for drill to 6300 siastrip			N3843

siabrosse	Plate brush	130 x 50	K046; K060; K080; K120	T7067
	Circular brush	140 x 30	K060; K080; K120	T7068



1915 siarexx topcut	Discs siafast	∅ 115	P040; P060-P120	T3213
1960 siarexx cut	Discs siafast	∅ 115	P040; P060-P120	T3251
1707 siapar	siafast	∅ 115	P016-P120	T3807
4924 siamet	Fibre disc	∅ 115	P016-P120	T6406
6200 scm		∅ 115	coarse a ≈ K060	N6771
		∅ 115	medium a ≈ K100	N6771
		∅ 115	very fine a ≈ K150	N6771



2920/21 siawood		29 x 533	P040; P060-P150	T5496
		60 x 400	P040; P060-P150	T5771
		65 x 410	P040; P060-P150	T5513
		75 x 457	P040; P060-P150	T5772
		75 x 480	P040; P060-P150	T5518
		75 x 508	P040; P060-P120	T5514
		75 x 533	P040; P060-P150	T5515
		75 x 575	P040; P060-P150	T5516
		75 x 610	P040; P060-P150	T5517
		100 x 533	P040; P060-P120	T5773
		100 x 552	P040; P060-P150	T5519
		100 x 560	P040; P060-P150	T5520
		100 x 610	P036; P040; P060-P150	T5521
		100 x 620	P040; P060-P150	T5522
		100 x 860	P040; P060-P150	T5523
		100 x 900	P040; P060-P150	T5524
		110 x 620	P040; P060-P150	T5525



2933 siatur jo		40 x 305	P060; P080; P120	T4273
-----------------------	--	----------	------------------	-------



1707 siapar	Sheets siafast	120 x 400	P016	T3853
		150 x 280	P016	T3852
		200 x 420	P016	T3823

Sanding paint

Removing paint

**Fine sanding
Intermediate
paint/varnish sanding**



1960 siarexx cut
P040 - P100

1707 siapar
P040 - P100

1960 siarexx cut
P120 - P180

1707 siapar
P120 - P150

1960 siarexx cut
P180 - P320



1915 siarexx topcut
P040 - P100

1960 siarexx cut
P040 - P100

1913 siawat fc
P060 - P120

1960 siarexx cut
P120 - P180

1935 siarexx flex
P120 - P180

2951 siasoft
P080 - P220

6120 siavlies
extra cut a
medium a
fine a

1913 siawat fc
P150 - P240

1960 siarexx cut
P220 - P600

1935 siarexx flex
P220 - P600

1748 siasoft
P180 - P400

6120 siavlies
very fine a
ultra fine s xs



6000 siawool
coarse

6000 siawool
medium
fine

sia product		Dimensions in mm	Grit range	Order no.
-------------	--	---------------------	------------	-----------



1960 siarexx cut	Polygon siafast with holes for dust extraction			
	• Rupes / Festo	100 x 147	P040; P060-P320	T3261
	• Festo	ø 110	P040; P060-P240	T3259
	• Bosch / Metabo	ø 109	P040; P060-P240	T3260

1707 siapar	Polygon siafast with holes for dust extraction			
	• Rupes / Festo	100 x 147	P120; P150	T3677
	• Festo	ø 110	P040; P060-P100	T3676
	• Bosch / Metabo	ø 109	P040; P060-P120	T3675



1915 siarexx topcut	Rolls plain	115 x 50 m	P040; P060-P150	T3283
1960 siarexx cut	Rolls plain	95 x 50 m	P040; P060-P320	T3229
		115 x 50 m	P040; P060-P600	T3232
	Strips Standard plain	230 x 280	P040; P060-P600	T3234
	Sheets siafast	70 x 125	P040; P060-P600	T3237

1935 siarexx flex	Rolls plain	115 x 50 m	P120-P600	T3263
	Strips Standard plain	230 x 280	P120-P600	T3264
	Sheets siafast	70 x 125	P120-P600	T3265

1748 siasoft	Sheets	115 x 140	P180-P220; P280-P400	T3204
---------------------	--------	-----------	----------------------	-------

2951 siasoft	Rolls	115 x 10 m	P080-P220	T3864
---------------------	-------	------------	-----------	-------

	Sheets	115 x 140	P080-P220	T3860
--	--------	-----------	-----------	-------

6120 siavlies	Rolls	100 x 10 m	medium a	≈ K120	N7056
----------------------	-------	------------	----------	--------	-------

		100 x 10 m	fine a	≈ K180	N7056
--	--	------------	--------	--------	-------

		100 x 10 m	very fine a	≈ K320	N7056
--	--	------------	-------------	--------	-------

		100 x 10 m	ultra fine s	≈ K600	N7056
--	--	------------	--------------	--------	-------

		100 x 10 m	ultra fine s xs	≈ K800	N7056
--	--	------------	-----------------	--------	-------

	Rolls	125 x 10 m	medium a	≈ K120	N7013
--	-------	------------	----------	--------	-------

		125 x 10 m	fine a	≈ K180	N7013
--	--	------------	--------	--------	-------

		125 x 10 m	very fine a	≈ K320	N7013
--	--	------------	-------------	--------	-------

		125 x 10 m	ultra fine s	≈ K600	N7013
--	--	------------	--------------	--------	-------

		125 x 10 m	ultra fine s xs	≈ K800	N7013
--	--	------------	-----------------	--------	-------

	Sheets	152 x 229	extra cut a	≈ K080	N7058
--	--------	-----------	-------------	--------	-------

		152 x 229	medium a	≈ K120	N7058
--	--	-----------	----------	--------	-------

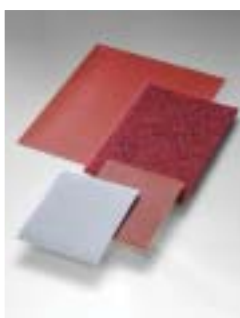
		152 x 229	fine a	≈ K180	N7058
--	--	-----------	--------	--------	-------

		152 x 229	very fine a	≈ K320	N7058
--	--	-----------	-------------	--------	-------

		152 x 229	ultra fine s	≈ K600	N7058
--	--	-----------	--------------	--------	-------

		152 x 229	ultra fine s xs	≈ K800	N7058
--	--	-----------	-----------------	--------	-------

1913 siawat fc	Strips	230 x 280	P060-P1200	T6021
-----------------------	--------	-----------	------------	-------



6000 siawool	Triangular box	4,3 liter	coarse	≈ K180	N9005.0001.1
			medium	≈ K320	N9005.0002.1
			fine	≈ K800	N9005.0003.1



	Large pack	20 liter	coarse	≈ K180	N7901.0001.1
			medium	≈ K320	N7901.0002.1
			fine	≈ K800	N7901.0003.1



Back plates

	sia product	Dimensions		Order no.	
	<p>Back plate with holes perforated for eccentric sanding machine, with various levels of hardness. Fastening parts for 5/16" - + M8 machines added.</p> <p>Grit recommendation for back plates: hard P060 - P180 medium P080 - P500 soft P220 - P600</p>	hard	7 holes	ø 150 mm	T7200
		medium	7 holes	ø 150 mm	T7201
		soft	7 holes	ø 150 mm	T7202
		hard	9 holes	ø 150 mm	T7203
		medium	9 holes	ø 150 mm	T7204
		soft	9 holes	ø 150 mm	T7205
	<p>Intermediate Pad to equip an existing hard pad for sanding down between paint coats. Foam insert makes the pad very adaptable to curvatures and flat surfaces.</p>	7 holes	ø 150 mm	T6740	
		9 holes	ø 150 mm	T6741	
	<p>Back plate hard for fibre discs and scm fibre discs max. 13'000 rpm.; no klett</p>	ø 115 mm	M14	T7001	
	<p>Back plate hard for scm discs max. 8'500 rpm.</p>	ø 115 mm	M14	T6977	
	<p>Back plate for rotary applications</p>	ø 115 mm	M14	T8583	
		ø 125 mm	M14	T8583	
		ø 150 mm	M14	T8583	
		ø 180 mm	M14	T8583	
	<p>Back plate for rotary applications</p>	ø 115 mm	5/8"	T8603	
		ø 125 mm	5/8"	T8603	
		ø 150 mm	5/8"	T8603	
		ø 180 mm	5/8"	T8603	

Accessories

sia product	Dimensions		Order no.	
	Fine aspiration mask for protection from solid dust particles. Single packed and foldable, made of skin friendly material. Euronorm EN/149 FF P2 (S).	Boxed with 15 pieces	T8357	
	Hand sanding block siafast with hard and soft foam backing, double side, for strips siafast	70 x 125 mm	dry	T7055
	Cork hand sanding block for strips siafast	70 x 125 mm	wet	T7053
	sia handpad round/soft for using ø 150 mm disc in handsanding application. siafast hook and loop system.	ø 150 mm		T8435
	Conversion kit sialett self-adhesive. To adapt siafast abrasives.	8 holes	79 x 166 mm	T7043
		8 holes	80 x 150 mm	T7044
		8 holes	92 x 230 mm	T7045
		10 holes	113 x 280 mm	T6952
		without holes	115 x 280 mm	T6954

Safety



For safety reasons, the wearing of ear protectors, goggles, protective masks and gloves, together with the use of dust extraction systems, is recommended. sia

abrasives contain no hazardous substances within the meaning of the hazardous substances regulation. Their environmentally-friendly disposal in modern refuse

incineration plants is permitted. We refer in particular to the FEPA safety recommendations and the FEPA safety data sheets for abrasives and substrates. You can

obtain these documents from sia Abrasives Industries AG, CH-8501 Frauenfeld.



With the sia wood sanding system, you achieve the end result you want on every surface.

sia Abrasives stands for Swiss quality from raw material to the manufacturing process and maximum precision from production to use. Our very advanced technologies guarantee highly consistent quality.

sia Abrasives – the name that stands for Swiss performance, delivery capacity and reliability, coupled with loyalty to all our partners.

Specialists who choose sia abrasives benefit from sia Abrasives' 125 years of experience in surface processing – our core competence – coupled with advanced sanding technology solutions and innovations launched at regular intervals.

sia Abrasives respects and protects people, our environment and its resources throughout all stages of the development, purchasing and manufacture of the sia wood sanding system.

sia Abrasives has been certified in accordance with the ISO 14001 Environmental Management System since January 2004.

sia Abrasives – Your Key to a Perfect Surface

Australia	sia Abrasives Australia Pty. Ltd., 958 Stud Road, P.O. Box 2070, Rowville, Vic.3178 Phone +61 3 9753 4333, Fax +61 3 9753 3288, E-mail sia.au@sia-abrasives.com
Austria	sia Abrasives GmbH, Mindelheimerstrasse 8, 6130 Schwaz Phone +43 5242 73 666, Fax +43 5242 73 666 6, E-mail sia.at@sia-abrasives.com
Belgium	sia Abrasives Belgium NV SA, Industriezone Asse 5, nr. 25, 1730 Mollem (Asse) Phone +32 2 454 00 28, Fax +32 2 454 00 21, E-mail sia.be@sia-abrasives.com
Brazil	sia Abrasivos Industriais Ltda, Rua Teodoro Franco de Oliveira, 290, São José dos Pinhais, PR, CEP 83065-190 Phone +55 41 382 53 33, Fax +55 41 382 53 33, E-mail sia.br@sia-abrasives.com
China	sia Abrasives Company Ltd., 1008 Hing Wai Centre, 7 Tin Wan Praya Rd, Aberdeen, Hongkong Phone +852 2553 8300, Fax +852 2553 7300, E-mail wellgrow@hkc.net
France	sia Abrasives France Sàrl, 22, av. des Nations, B.P. 60073, 95972 Roissy Charles de Gaulle Cedex Phone +33 1 48 17 80 90, Fax +33 1 48 63 21 38, E-mail sia.fr@sia-abrasives.com
Germany	sia Abrasives Deutschland GmbH, Kirschbaumweg 14-18, 50996 Köln Phone +49 2236 96280 0, Fax +49 2236 96280 40, E-mail sia.de@sia-abrasives.com Weck Schleifmittel GmbH, Lindgesfeld 29, 42653 Solingen-Gräfrath Phone +49 212 2581 90, Fax +49 212 25819 19, E-mail schleifen@wecoflex.de
Great Britain	sia Abrasives (G.B.) Ltd., Po Box 3, Ellistones Lane, Greetland, Halifax HX4 8NJ West Yorkshire, Phone +44 1422 31 30 00, Fax +44 1422 31 30 46, E-mail sia.gb@sia-abrasives.com sia Fibril Limited, Ellistones Lane, Greetland, Halifax HX4 8NJ West Yorkshire Phone +44 1422 31 30 00, Fax +44 1422 31 30 46, E-mail sia@sia-fibril.com
Mexico	sia Abrasivos México S.A. de C.V., Miguel Angel de Quevedo 8-202, Col. ExHacienda de Guadalupe Chimalistac, 01050 México, D.F. Phone +52 (525) 5662 79 83, Fax +52 (525) 5661 24 11
Spain	sia Abrasives España SA, Picos de Europa, 4, 28830 Pol. Ind. San Fernando de Henares (Madrid) Phone +34 91 678 41 50, Fax +34 91 678 14 73, E-mail sia.es@sia-abrasives.com
Switzerland	sia Abrasives Industries AG, Mühlewiesenstrasse 20, CH-8501 Frauenfeld Phone +41 52 724 41 11, Fax +41 52 724 45 45, E-mail: sia.ch@sia-abrasives.com , Internet: www.sia-abrasives.com
USA	sia Abrasives, Inc. USA, 1327-J Wood Branch Drive, Charlotte, NC 28273 Phone +1 704 587 73 55, Fax +1 704 587 73 50, E-mail sia.us@sia-abrasives.com sia Capco, 900 Lund Boulevard, Anoka, Minnesota 55303 Phone 800 624 45 82, +1 612 427 24 68, Fax 800 292 90 32, +1 612 427 31 27, Internet: www.capco-abr.com

The sia Group is represented in more than 80 countries.

